



MILTON
STONE

Clifton Hill, NW8

£3,495,000 Freehold

4 bedroom terraced house for sale

Description

A beautifully presented and well-proportioned Freehold terraced house in this highly sought-after location in St Johns Wood. Arranged over four floors and featuring a double reception room, 4 bedrooms, 2 bathrooms and a spacious open-plan kitchen/dining room leading directly on to a beautiful 65 ft south-facing rear garden. Clifton Hill is within walking distance of St Johns Wood High Street and Underground Station (Jubilee Line) and the American School in London.

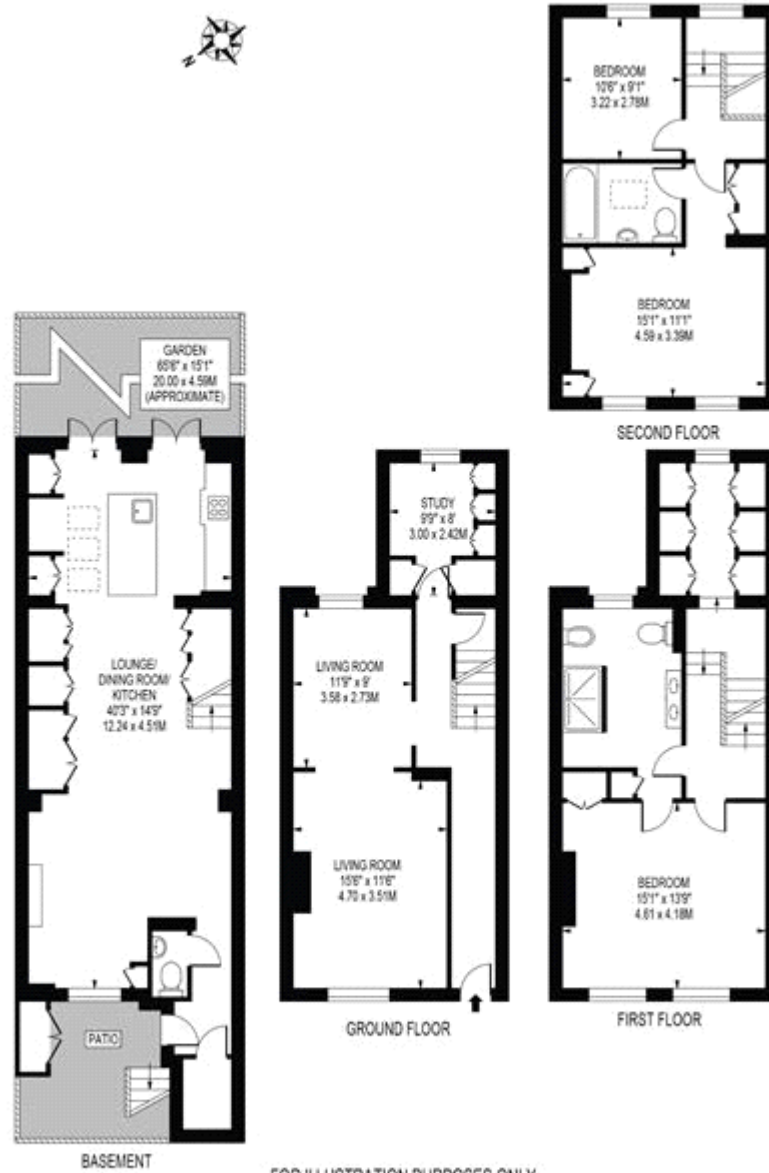
Tenure

Freehold



CLIFTON HILL

APPROXIMATE GROSS INTERNAL FLOOR AREA: 2090 SQ FT - 194.14 SQ M



FOR ILLUSTRATION PURPOSES ONLY

THIS FLOOR PLAN SHOULD BE USED AS A GENERAL OUTLINE FOR GUIDANCE ONLY AND DOES NOT CONSTITUTE IN WHOLE OR IN PART AN OFFER OR CONTRACT. ANY INTENDING PURCHASER OR LESSEE SHOULD SATISFY THEMSELVES BY INSPECTION, SEARCHES, ENQUIRIES AND FULL SURVEY AS TO THE CORRECTNESS OF EACH STATEMENT. ANY AREAS, MEASUREMENTS OR DISTANCES QUOTED ARE APPROXIMATE AND SHOULD NOT BE USED TO VALUE A PROPERTY OR BE THE BASIS OF ANY SALE OR LET.

