



Ashburn Gardens, London, SW7

£2,500,000 Share of Freehold

3 bedroom apartment for sale

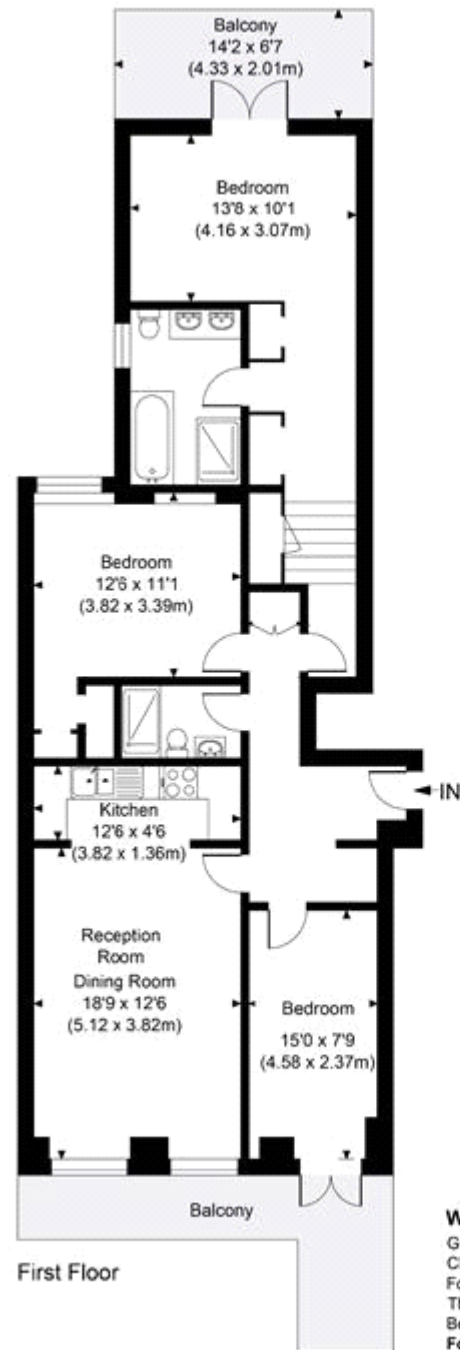
Description

A modern three double bedroom apartment in the heart of South Kensington. The flat benefits from a fabulous 20 ft, high-ceilinged reception room with wooden floors and a balcony, two bathrooms (one en-suite) and a quiet sunny terrace at the rear of the property. Situated in a period stucco fronted building moments from Gloucester Road tube station and within walking distance of South Kensington and Hyde Park.

Tenure

Share of Freehold (98 years)





Wickham Court

Gross Internal Area 1082 sq. ft / 100.48 sq. m

CH = Ceiling Heights

For identification purposes only.

The Position and size of doors, windows, appliances

Bedroom and other features are approximate only.

For illustrative purposes only - not to scale

